



## Weatherford Soccer Association



*The rules of soccer are very simple, basically it is this: if it moves, kick it. If it doesn't move, kick it until it does.*

*-- Phil Woosnam*



## Weatherford Soccer Association

### International Football Association Board (IFAB) Soccer Playing Rules

- ⚽ Some rules are age specific.
- ⚽ Some are NTSA or US soccer enforced playing rules.
- ⚽ A print-out of age specific rules is included for you in your Coaching packet.
  - How many players to field and game length.
  - When to Substitute.
  - What are Build-out Lines.
- ⚽ Some rules are called leniently by Referees in the younger age groups (U4-U6)
  - If we called everything there would be too many game stoppages for kids to get to play.
  - The point is to teach the kids the game of soccer and let them have fun.

**Hint:** Download the IFAB App  
This is a great resource for Soccer Laws and Rules. It is recommended for ALL Referees.

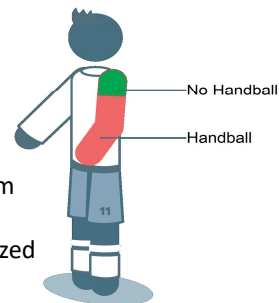


## Weatherford Soccer Association

### IFAB Rule Changes

#### • Law 12 (Fouls and Misconduct) -

- Handball:
  - the boundary between the shoulder and the arm is defined as the bottom of the armpit
  - 'accidental' handball by an attacking player (or team-mate) is only penalized if it occurs 'immediately' before a goal or clear goal-scoring
- A goalkeeper can receive a YC or be sent off (RC) for 'illegally' touching the ball a second time after a restart (e.g. goal kick, free kick etc.) even if the touch is with the hand/arm
- Any offence (not only a foul) which 'interferes with or stops a promising attack' should result in a YC
- A player who fails to respect the 4m required distance at a dropped ball should receive a YC
- If the referee plays advantage or allows a 'quick' free kick for an offence which 'interfered with or stopped a promising attack', the YC is not issued



## Weatherford Soccer Association

### U4 League Playing Rules

League Rep – Danielle Sensabaugh

- ⚽ Ball Size: #3
- ⚽ Number of players: 4 v 4
- ⚽ No Goal Keeper
- ⚽ 4 quarters of 8 minutes each
- ⚽ Substitute: own throw-in, either team's goal kick or after a goal is scored
- ⚽ No Heading allowed
- ⚽ No Offside calls
- ⚽ No Penalty Kicks
- ⚽ Free Kicks: All Indirect Free kicks
- ⚽ Coach can be on the field EVERY game, not participating



## Weatherford Soccer Association

### U5 League Playing Rules

League Rep – Laurelle Hill

- ⚽ Ball Size: #3
- ⚽ Number of players: 4 v 4
- ⚽ No Goal Keeper
- ⚽ 4 quarters of 10 minutes each
- ⚽ Substitute: own throw-in, either team's goal kick or after a goal is scored
- ⚽ No Heading allowed
- ⚽ No Offside calls
- ⚽ No Penalty Kicks
- ⚽ Free Kicks: All Indirect Free kicks
- ⚽ Coach can be on the field for the first 2 game weekends, not participating



## Weatherford Soccer Association

### U6 League Playing Rules

League Rep – Ryan Kuhlmeier

- ⚽ One Center Referee
- ⚽ Ball Size: #3
- ⚽ Number of players: 4 v 4
- ⚽ No Goal Keeper
- ⚽ 4 quarters of 10 minutes each
- ⚽ Substitute: own throw-in, either team's goal kick or after a goal is scored
- ⚽ No Heading allowed
- ⚽ No Offside calls
- ⚽ No Penalty Kicks
- ⚽ Free Kicks: All Indirect Free kicks
- ⚽ Coach can be on the field for the first 2 game weekends, not participating

Center Referee must give  
permission before  
Substitutions can be made.



# Weatherford Soccer Association

## U7 League Playing Rules

League Rep – Brie Heimlich

- ⚽ One Center Referee
- ⚽ Ball Size: #3
- ⚽ Number of players: 4 v 4
- ⚽ No Goal Keeper
- ⚽ 4 quarters of 10 minutes each
- ⚽ Substitute: own throw-in, either team's goal kick or after a goal is scored
- ⚽ No Heading allowed
- ⚽ No Offside calls
- ⚽ No Penalty Kicks
- ⚽ Free Kicks: All Indirect Free kicks
- ⚽ Coach can NOT be on the field.

Center Referee must give  
permission before  
Substitutions can be made.



# Weatherford Soccer Association

## U8 League Playing Rules

League Rep – Ricky Hill

- ⚽ One Center Referee
- ⚽ Ball Size: #3
- ⚽ Number of players: 4 v 4
- ⚽ No Goal Keeper
- ⚽ 4 quarters of 10 minutes each
- ⚽ Substitute: own throw-in, either team's goal kick or after a goal is scored
- ⚽ No Heading allowed
- ⚽ No Offside calls
- ⚽ No Penalty Kicks
- ⚽ Free Kicks: All Indirect Free kicks
- ⚽ Coach can NOT be on the field.

Center Referee must give  
permission before  
Substitutions can be made.



## Weatherford Soccer Association

### U9 and up - Travel Teams

⚽ North Central Soccer Alliance (NCSA):

- Weatherford Soccer Association
- Granbury Soccer Association
- Stephenville Soccer Association
- Mineral Wells Soccer Association



## Weatherford Soccer Association

### U9 & U10 League Playing Rules

League Reps – Mandy Rice (U9) & Cherie Long (U10)

- ⚽ 1 Center Referee and 2 Assistant Referees
- ⚽ Ball Size: #4
- ⚽ Number of players: 7 v 7
- ⚽ Goal Keeper, no drop kicks or punting allowed
- ⚽ 2 halves of 25 minutes each
- ⚽ Substitute: own throw-in, either team's goal kick or after a goal is scored
- ⚽ No Heading allowed
- ⚽ Offside calls between build-out line and defending goal line (using FIFA guidelines).
- ⚽ Penalty Kicks per FIFA guidelines
- ⚽ Free Kicks per FIFA guidelines
- ⚽ Coach can NOT be on the field

Center Referee must give  
permission before  
Substitutions can be made.



# Weatherford Soccer Association

## U9 & U10 Build-Out Lines

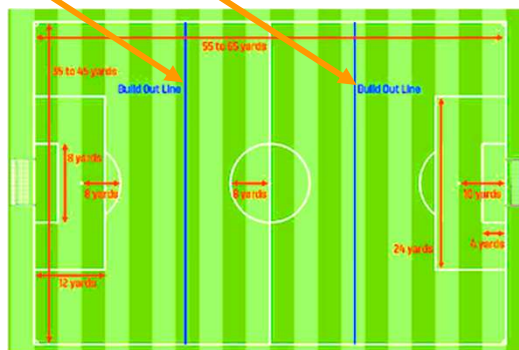
- ⚽ When the goalkeeper has the ball in his or her hands during play from the opponent, the opposing team must move behind the build out line until the ball is put into play
- ⚽ Once the opposing team is behind the build out line, the goalkeeper can pass, throw or roll the ball into play (punts and drop kicks are not allowed)
- ⚽ After the ball is put into play by the goalkeeper, the opposing team can cross the build out line and play resumes as normal
  - Ideally, the goalkeeper will wait to put the ball into play once all opponents are past the build out line.
  - However, the goalkeeper can put the ball into play sooner but he or she does so accepting the positioning of the opponents and the consequences of how play resumes.



# Weatherford Soccer Association

## U9 & U10 Build-Out Lines

- ⚽ The opposing team must also move behind the build-out line during a goal kick until the ball is put into play
- ⚽ Players can ONLY be penalized for an offside offense between the build-out line and goal line
- ⚽ The goalkeeper can place the ball on the ground and kick it but once they release the ball it is a live ball.





## Weatherford Soccer Association

### U11 & U12 League Playing Rules

League Reps – Juan Guzman (U11) & Emily Gilmore (U12 and up)

- ⚽ One Center Referee and 2 Assistant Referees
- ⚽ Ball Size: #4
- ⚽ Number of players: 9 v 9
- ⚽ Goal Keeper , drop kicks or punting allowed
- ⚽ 2 halves of 30 minutes each
- ⚽ Substitute: own throw-in, either team's goal kick or after a goal is scored
- ⚽ No Heading allowed
- ⚽ Offside calls per FIFA guidelines
- ⚽ Penalty Kicks per FIFA guidelines
- ⚽ Free Kicks per FIFA guidelines
- ⚽ Coach can NOT be on the field

Center Referee must give  
permission before  
Substitutions can be made.



## Weatherford Soccer Association

### U13 & U14 League Playing Rules

League Reps – Emily Gilmore (U12 and up)

- ⚽ One Center Referee and 2 Assistant Referees
- ⚽ Ball Size: #5
- ⚽ Number of players: 11 v 11
- ⚽ Goal Keeper, drop kicks or punting allowed
- ⚽ 2 halves of 35 minutes each
- ⚽ Substitute: own throw-in, either team's goal kick or after a goal is scored
- ⚽ Heading allowed
- ⚽ Offside calls per FIFA guidelines
- ⚽ Penalty Kicks per FIFA guidelines
- ⚽ Free Kicks per FIFA guidelines
- ⚽ Coach can NOT be on the field

Center Referee must give  
permission before  
Substitutions can be made.



# Weatherford Soccer Association

## U15 & U16 League Playing Rules

League Reps – Emily Gilmore (U12 and up)

- ⚽ One Center Referee and 2 Assistant Referees
- ⚽ Ball Size: #5
- ⚽ Number of players: 11 v 11
- ⚽ Goal Keeper, drop kicks or punting allowed
- ⚽ 2 halves of 40 minutes each
- ⚽ Substitute: own throw-in, either team's goal kick or after a goal is scored
- ⚽ Heading allowed
- ⚽ Offside calls per FIFA guidelines
- ⚽ Penalty Kicks per FIFA guidelines
- ⚽ Free Kicks per FIFA guidelines
- ⚽ Coach can NOT be on the field

Center Referee must give  
permission before  
Substitutions can be made.